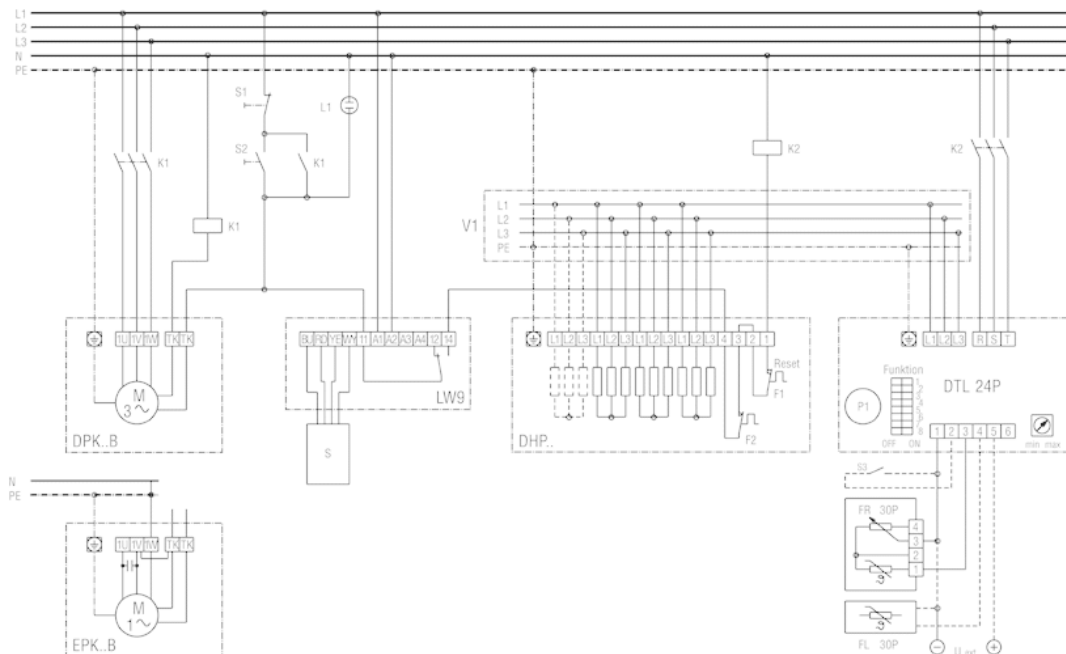


# WIRING DIAGRAM

## DHP 28-16



### DHP with EPK / DPK and DTL 24 P



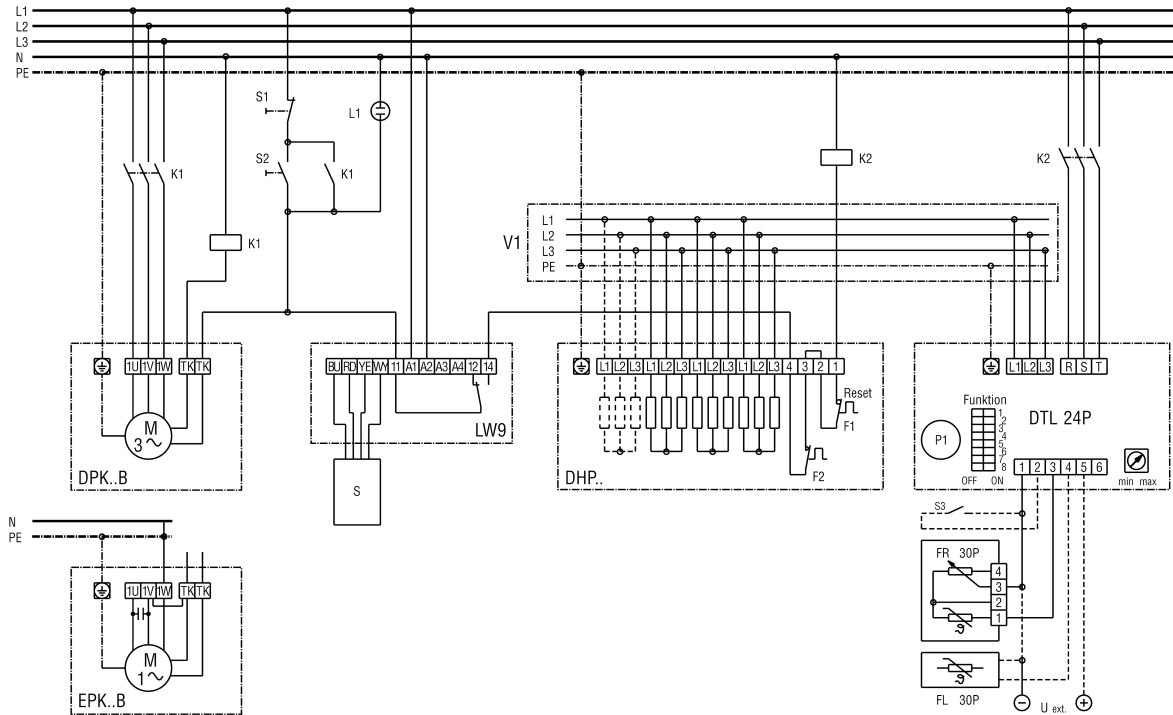
- S1 system off
- S2 system on
- L1 control light system on
- K1 contactor US 16
- K2/K3 contactor to be supplied by the customer
- DPK..B centrifugal fan, DPK model series
- EPK..B centrifugal fan, EPK model series
- LW 9 air flow monitor (relay picks up with air flow)
- DHP.. DHP 28-28.31-28 air heater
- F1 temperature limiter
- F2 safety temperature limiter
- DTL 24 P electronic temperature controller
- DTL 2 P-L basic power board for DTL 24 P
- P1 setpoint generator DTL 24 P
- S3 night reduction 4 K
- FR 30 P room sensor with external setpoint generator
- FL 30 P supply air channel sensor

# WIRING DIAGRAM

## DHP 28-16



### DHP with EPK / DPK and DTL 24 P



- S1 system off
- S2 system on
- L1 control light system on
- K1 contactor US 16
- K2/K3 contactor to be supplied by the customer
- DPK..B centrifugal fan, DPK model series
- EPK..B centrifugal fan, EPK model series
- LW 9 air flow monitor (relay picks up with air flow)
- DHP.. DHP 28-28.31-28 air heater
- F1 temperature limiter
- F2 safety temperature limiter
- DTL 24 P electronic temperature controller
- DTL 2 P-L basic power board for DTL 24 P
- P1 setpoint generator DTL 24 P
- S3 night reduction 4 K
- FR 30 P room sensor with external setpoint generator
- FL 30 P supply air channel sensor