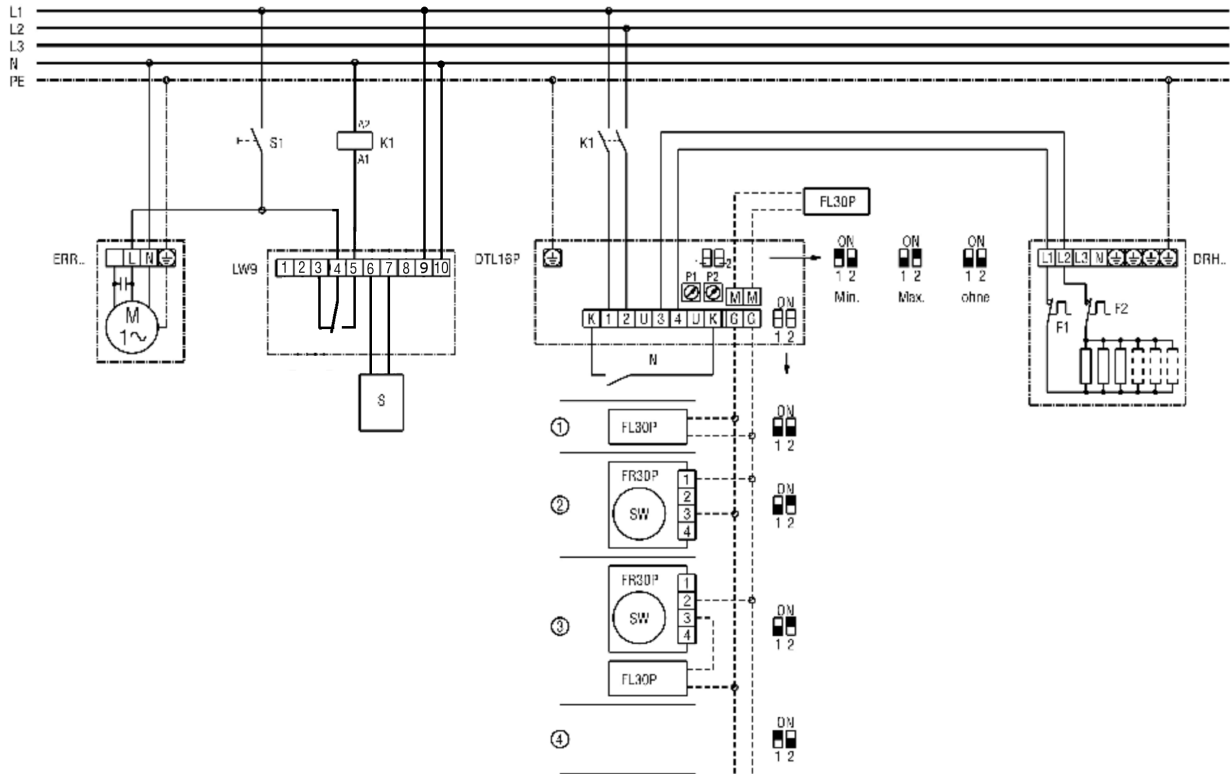


### Setting options for DRH...



- S1 - system on
- K1 - heating release
- S - sensor
- ERR - centrifugal duct fan
- LW 9 - air flow monitor
- ETL 16 P - electronic temperature controller
- DTL 16 P - electronic temperature controller
- FL 30 P - channel sensor for minimum or maximum limitation
- FR 30 P - room sensor
- DRH - electrical air heater
- F1 - temperature limiter with manual reset
- F2 - temperature limiter with automatic reset
- N - night reduction
- ① External channel sensor and internal setpoint generator in ETL 16 P
- ② External room sensor and external setpoint generator
- ③ External channel sensor and external setpoint generator
- ④ Internal room sensor and internal setpoint generator in DTL 16 P