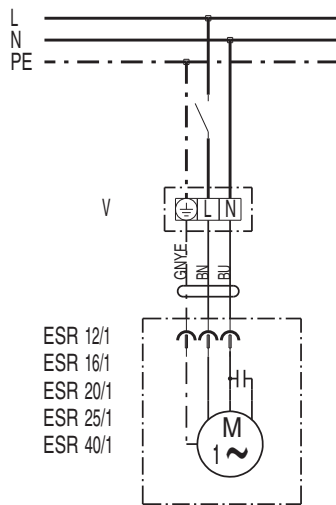
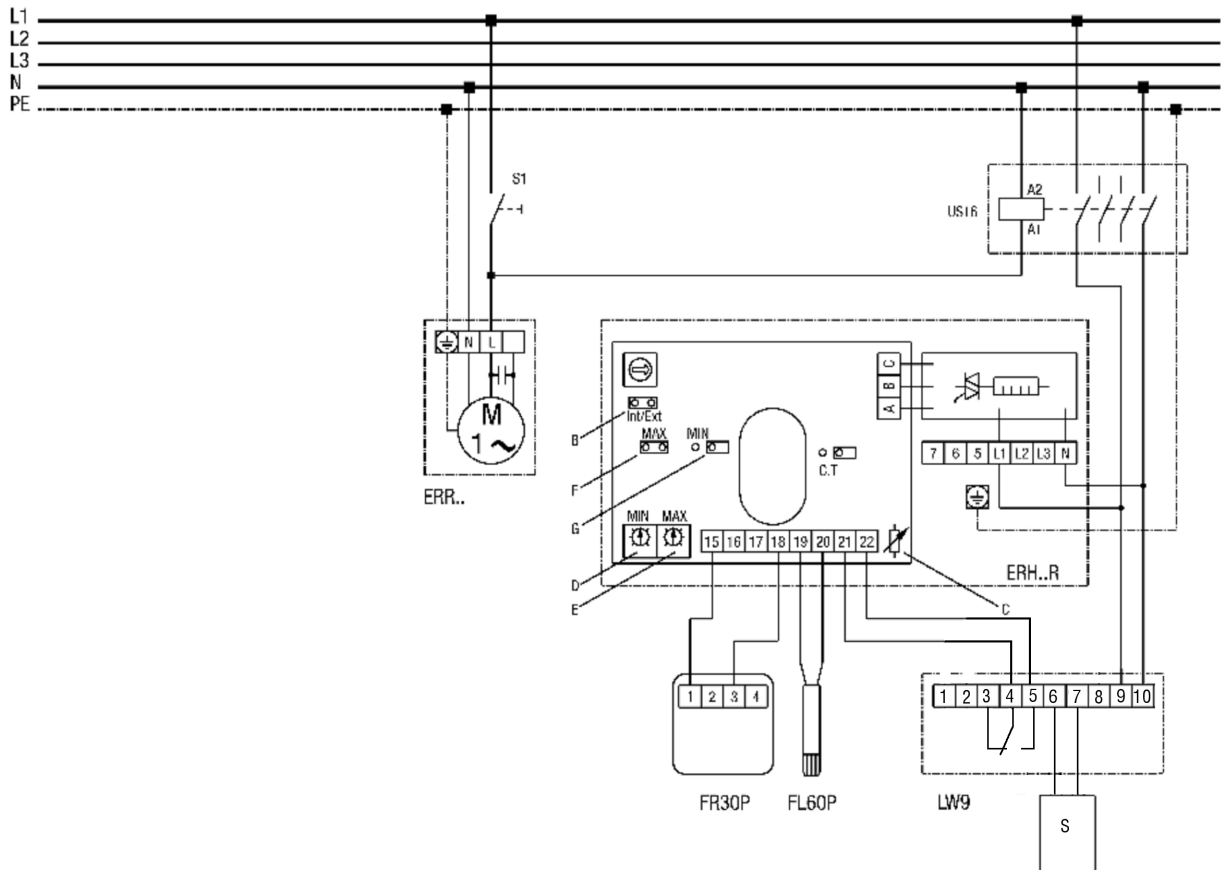


# WIRING DIAGRAM

## ESR 31 S



### Duct fan with ERH 16-2 R electric air heater



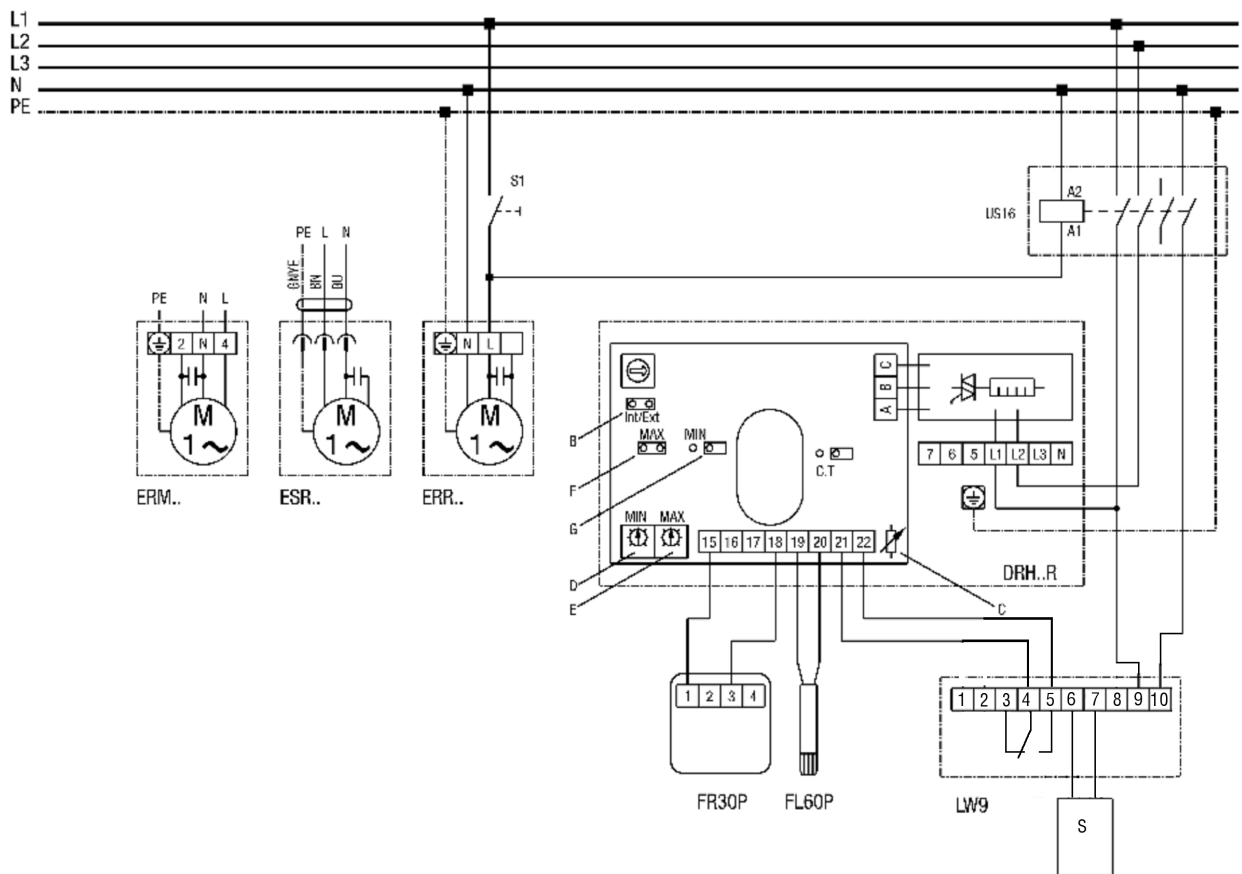
# WIRING DIAGRAM



## ESR 31 S

- S1 - system on
- US16 - all-pole isolating switch (contactor)
- ERR... centrifugal duct fan
- ERH...R electrical air heater: ERH16-2R
- B=Int/ext bridge must be closed
- C=Do not change potentiometer setting
- D=Setpoint potentiometer for MIN limitation
- E=Setpoint potentiometer for MAX limitation
- F=Bridge for MAX limitation, bridge must be closed!
- G=If bridge is closed, MIN limitation is also active
- FR30P - ext. setpoint controller (0-30°C) with room sensor
- FL30P - ext. channel sensor for MIN, MAX limitation
- LW9 - air flow monitor (in position N)
- Installation of LW9 sensor on incoming side of air heater
- 0-30°C setpoint setting and recording of room temperature with FR30P
- 0-60°C min/max limitation in supply air channel with FL60P

### Duct fan with electric air heater DRH 16-5R and DRH 20-6R



## WIRING DIAGRAM

### ESR 31 S



S1 - system on  
US16 - all-pole isolating switch (contactor)  
ERR... centrifugal duct fan  
DRH...R electric air heater: DRH16-2R or DRH20-6R  
B=Int/ext bridge must be closed  
C=Do not change potentiometer setting  
D=Setpoint potentiometer for MIN limitation  
E=Setpoint potentiometer for MAX limitation  
F=Bridge for MAX limitation, bridge must be closed!  
G=If bridge is closed, MIN limitation is also active  
FR30P - ext. setpoint controller (0-30°C) with room sensor  
FL30P - ext. channel sensor for MIN, MAX limitation  
LW9 - air flow monitor (in position N)  
Installation of LW9 sensor on incoming side of air heater  
0-30°C setpoint setting and recording of room temperature with FR30P  
0-60°C min/max limitation in supply air channel with FL60P

---