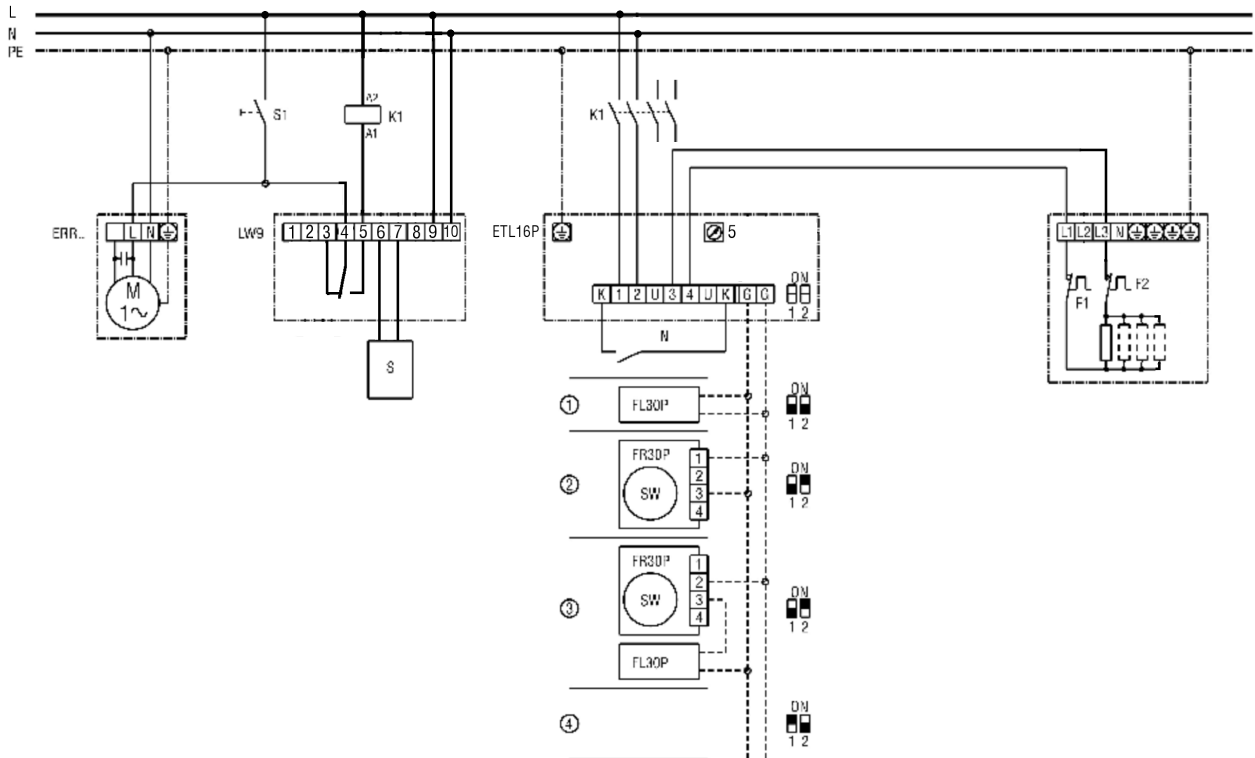


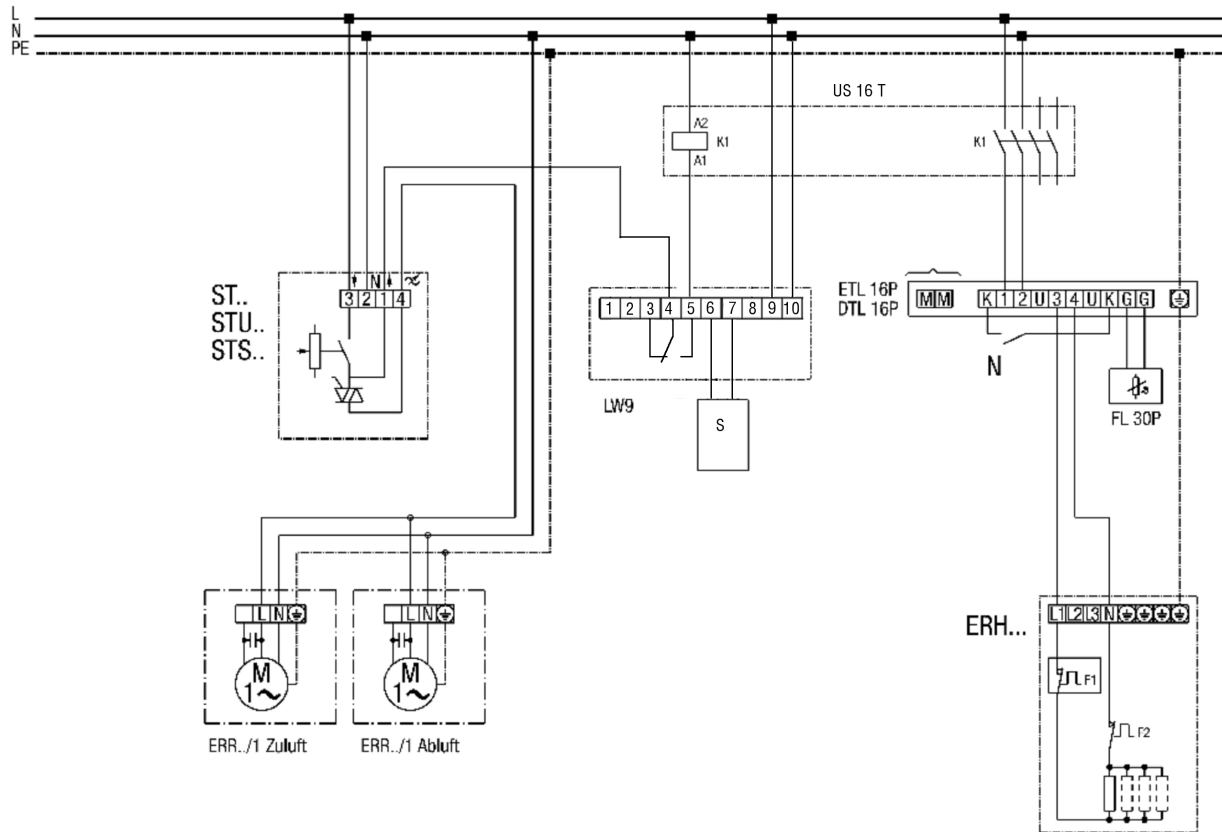
## ETL 16 P

### ETL 16 P temperature control system with ERH... electric air heater and LW 9 air flow monitor



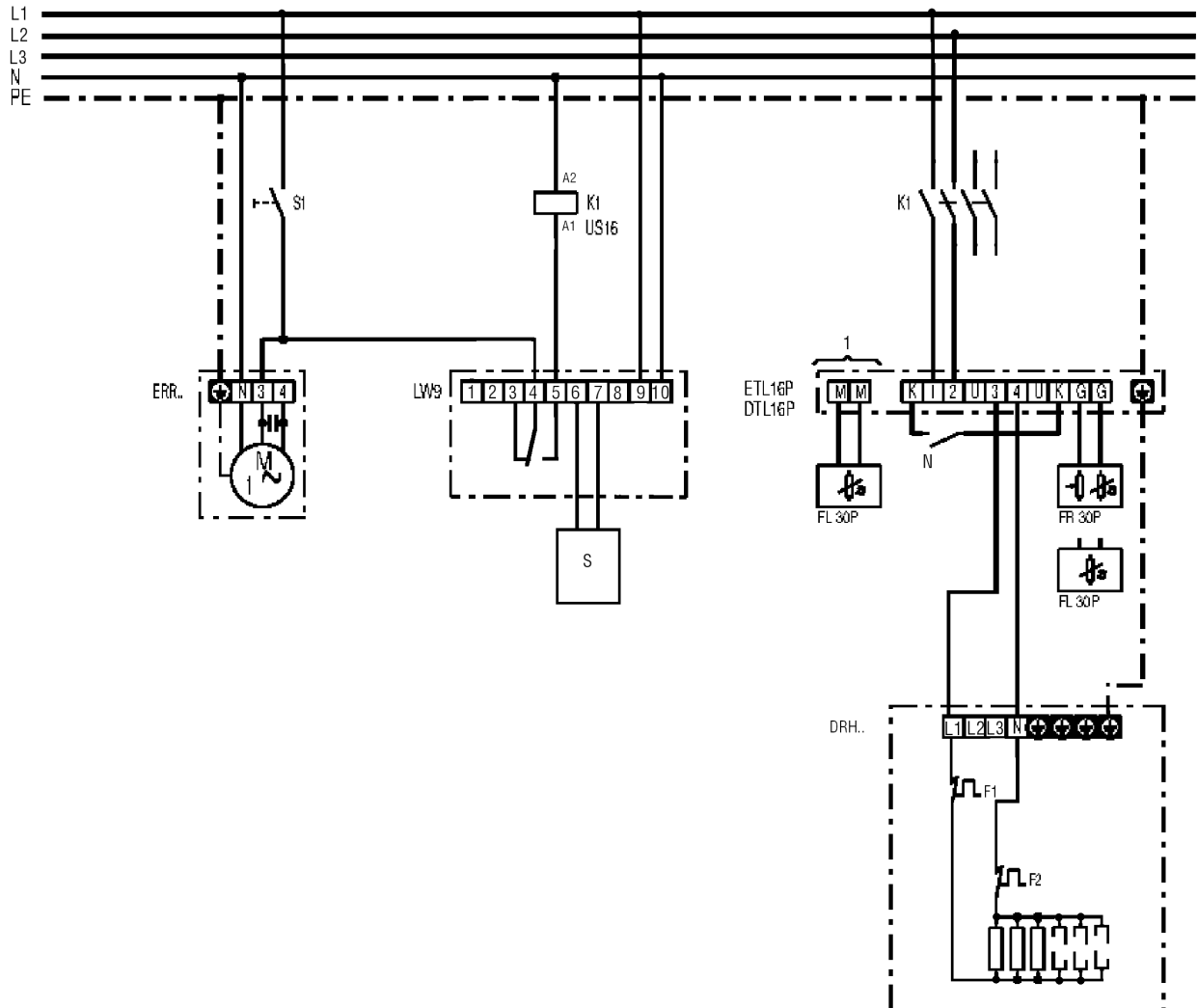
- 1 - external channel sensor and internal setpoint generator in ETL 16 P
- 2 - external room sensor and external setpoint generator
- 3 - external channel sensor and external setpoint generator
- 4 - internal room sensor and internal setpoint generator in ETL 16 P
- 5 - 0...10 K setting for night reduction
- S1 - system on
- K1 - heating release (US16)
- LW 9 - air flow monitor
- FL 30 P - channel sensor
- FR 30 P - room sensor
- ERH... - electric air heater
- F1 - temperature limiter
- F2 - safety temperature limiter
- S - sensor
- SW- setpoint
- N - night reduction

### ERH... electric air heater with LW 9 air flow monitor and ST speed controller



- K1 - heating release (US16T)
- ERR .. / 1 - centrifugal fan
- LW 9 - air flow monitor
- ETL 16 P - electronic temperature controller
- DTL 16 P - electronic temperature controller
- FL 30P channel sensor
- ST.. STU.., STS.. speed controller
- ERH - electric air heater
- F1 - temperature limiter
- F2 - safety temperature limiter
- N - night reduction
- ① Only with DTL 16 P

**ETL 16 P temperature control system with DRH... electric air heater and LW 9 air flow monitor**



- 1 - external channel sensor and internal setpoint generator in ETL 16 P
- 2 - external room sensor and external setpoint generator
- 3 - external channel sensor and external setpoint generator
- 4 - internal room sensor and internal setpoint generator in ETL 16 P
- 5 - 0...10K setting for night reduction
- S1 - system on
- K1 - heating release (US16)
- LW 9 - air flow monitor
- FL 30 P - channel sensor
- FR 30 P - room sensor
- DRH... - electric air heater
- F1 - temperature limiter
- F2 - safety temperature limiter
- S - sensor
- SW- setpoint
- N - night reduction