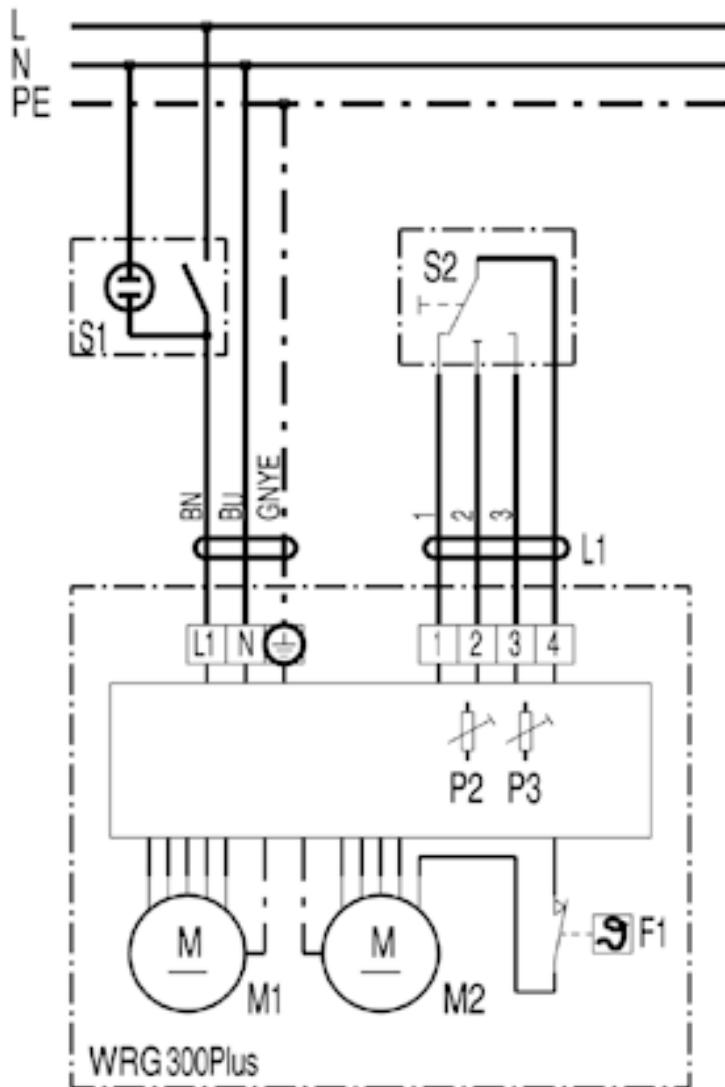


WIRING DIAGRAM

WRG300PLUS

WRG 300 plus



- S1 main switch (illuminated, to be provided by the customer)
- S2 3-step switch (to be provided by the customer) (1 = energy-saving, 2 = medium, 3 = high)
- L1 low-current cable, 4 wires, > 0.5mm² (to be provided by the customer)
- P2 setting level 2
- P3 setting level 3
- M1 exhaust air fan
- M2 supply air fan
- F1 frost protection