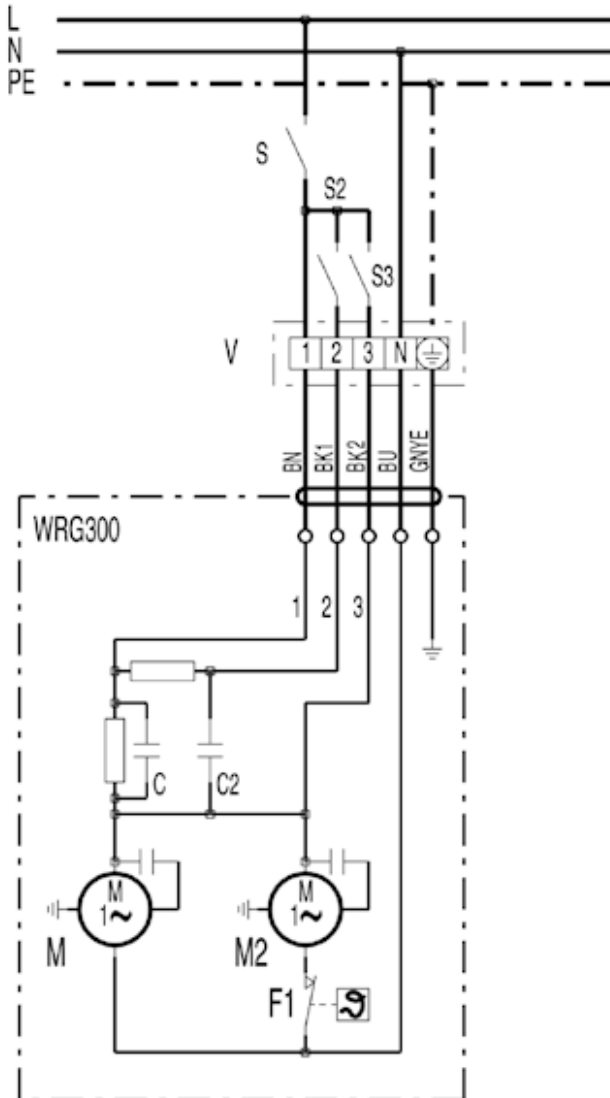


WIRING DIAGRAM

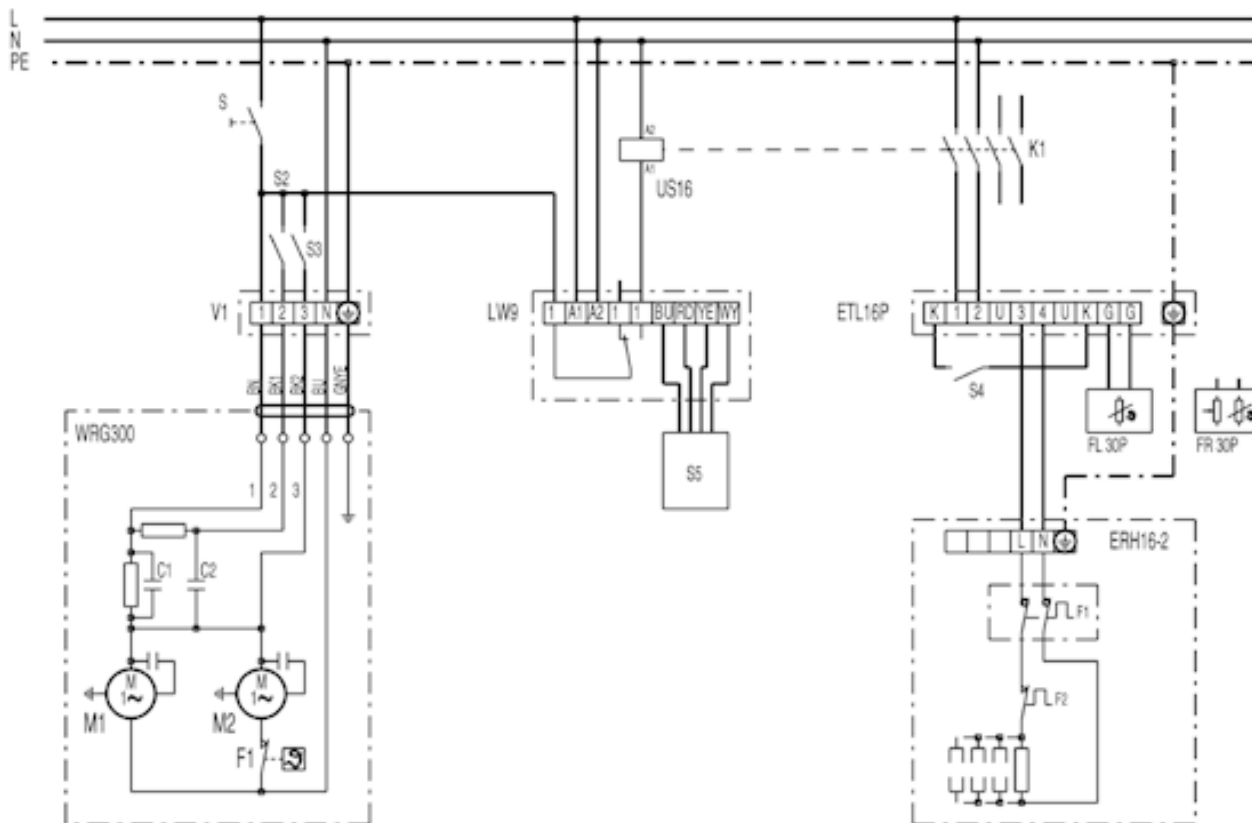
WRG300

WRG 300



- S1 On / Off
- S2 WRG in level 2
- S3 WRG in level 3
- V1 distributor (to be provided by the customer)
- M1 exhaust air fan
- M2 supply air fan
- F1 frost protection

WRG 300 with ERH 16-2 and ETL 16 P

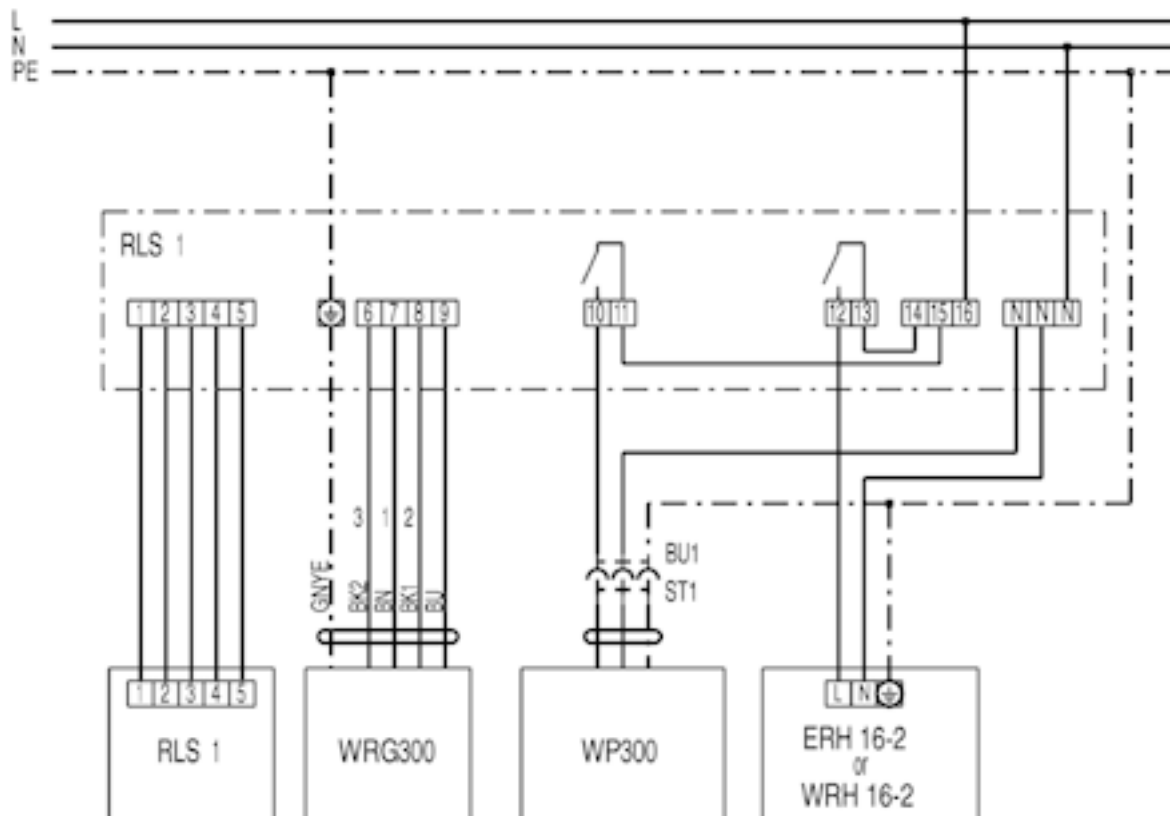


- S1 system on
- US 16/K1 heating release
- S2 WRG300 in level 2
- S3 WRG300 in level 3
- V1 distributor / to be provided by the customer
- WRG 300 heat recovery unit (1 = step 1 (economy), 2 = step 2 (middle), 3 = step 3 (high))
- M1 exhaust air fan
- M2 supply air fan
- LW 9 air flow monitor (in position N)
- ETL 16 P electr. temperature controller
- FL 30 P channel sensor
- FR 30 P room sensor with setpoint generator
- S4 night reduction
- ERH 16-2 electric air heater
- F1 temperature limiter
- F2 safety temperature limiter
- S5 sensor

WIRING DIAGRAM

WRG300

WRG 300 with RLS 1, WP 300 and ERH 16-2



TH 10 thermostat: Anti-frost protection fuse

R1 outside air sensor (supply temperature). Installation: outside air duct, close to the outside wall / north side

WRG 300 K Heat recovery unit

M1 exhaust air fan

M2 supply air fan

F1 anti-frost protection fuse. In the WRG 300 system, this must be supplied by the customer, bridged to terminals M2 and M4. See WRG 300 K wiring diagram

WP 300 K heat pump

P1 pressostat (high pressure fuse)

T1 anti-frost protection fuse (vaporiser)

Y1 cooling / heating change over valve

M1 compressor

BU1 safety plug (supplied by the customer)

* Terminals M2 and M4 must be bridged by the customer