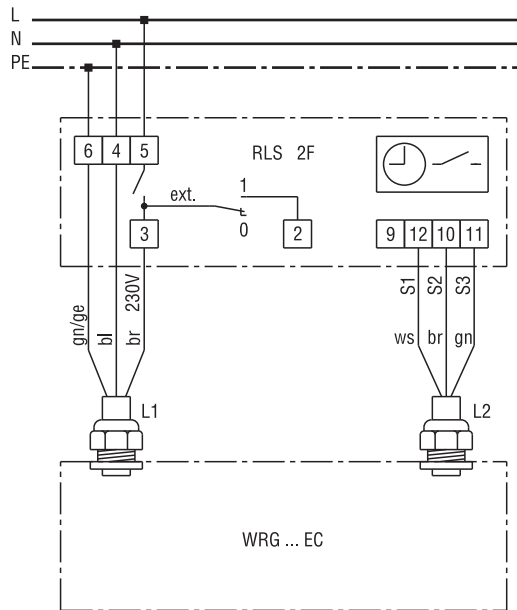
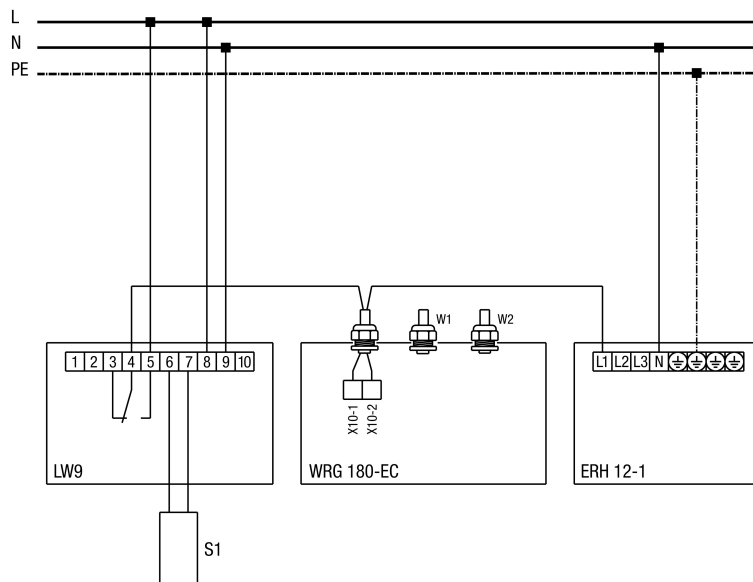


WIRING DIAGRAM

WRG 180 EC



WRG 180 EC ventilation unit with ERH electrical air heater



WIRING DIAGRAM

WRG 180 EC

LW 9 - air flow monitor

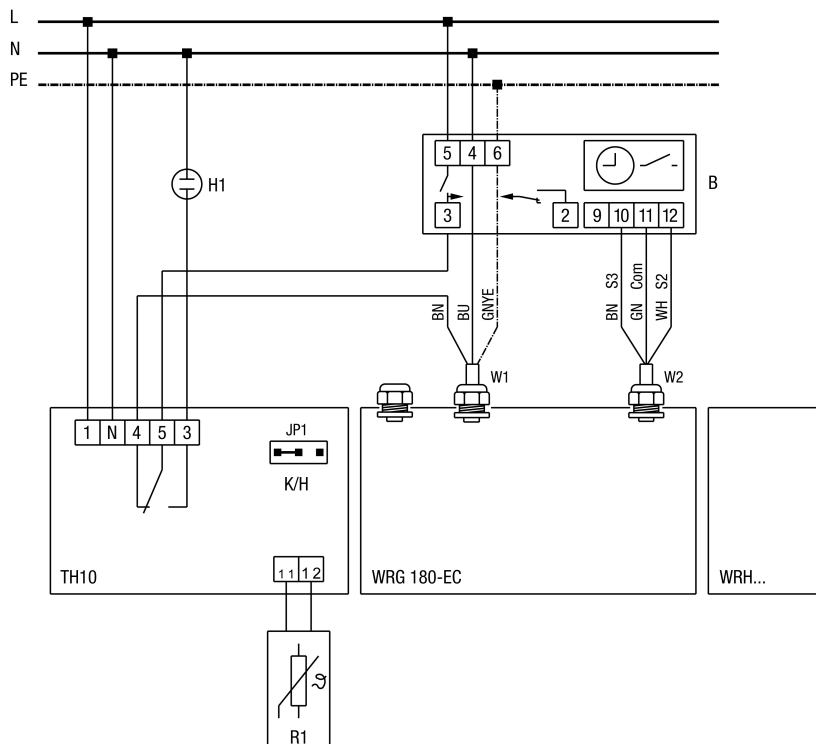
S1 - air flow monitor / installation ahead of the ERH 12-1

WRG 180 EC - ventilation unit

ERH - electrical air heaters

If the WRG 180 EC is installed in a passive-energy house, a heat register in the outside air is necessary, in order to guarantee a permanent air exchange. It preheats cold outside air and keeps the heat exchanger free of frost. If the outside air temperature gets cold, the external frost protection heating of the ERH 12-1 switches on and protects the WR 180 EC against icing up.

WRG 180 EC ventilation unit with RLS 2 F room air control and WRH water air heater



TH 10 - thermostat with R1 temp.sensor

R1 - temperature sensor / installation in the supply air channel ahead of the WRH

JP1 - plug jumper JP1 on operating mode "K". Relay switches WR 180 EC off as the temperature drops.

WRG 180 EC - ventilation unit

B - room air control RLS 2 F (operator unit with timer)

W1 - 230 V AC connecting cable

W2 - control cable for room air control

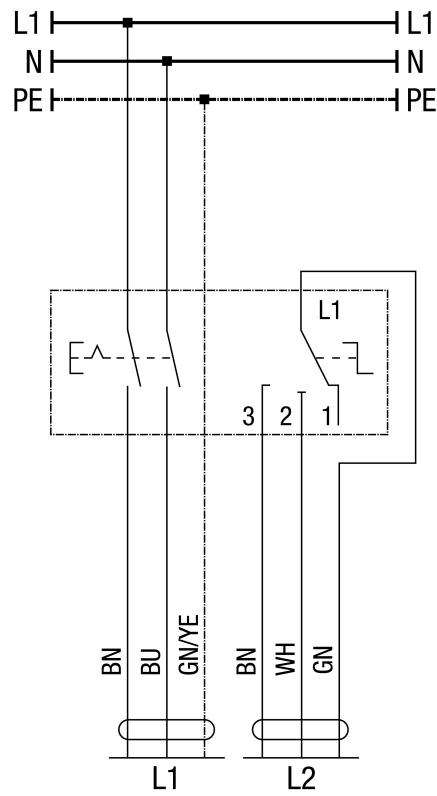
WRH... - water air heater

WIRING DIAGRAM



WRG 180 EC

WRG 180 EC / WRG 300 EC / WRG 400 EC with room air control RLS 3



Fuse protection provided by customer
