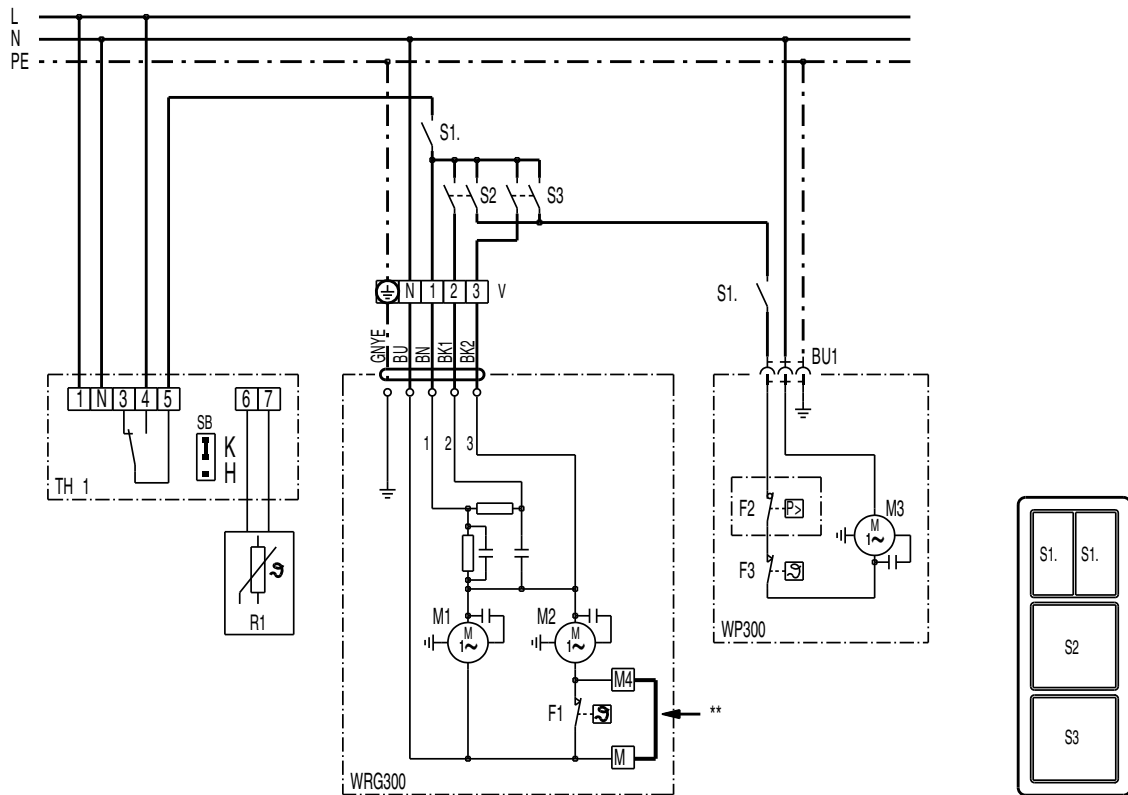


WIRING DIAGRAM

WRG 300 WP



S1.1 System on, WRG 300 at step 1, WP300 off

S1.2 Main switch WP 300

S2 WRG 300 at step 2, WP 300 on

S3 WRG 300 at step 3, WP 300 on

TH10 Thermostat: Anti-frost protection fuse

R1 Outside air sensor (supply temperature). Installation: outside air duct, close to the outside wall / north side

WRG 300 heat recovery unit (1 = step 1 (economy), 2 = step 2 (middle), 3 = step 3 (high))

M1 Exhaust air fan

M2 Supply air fan

F1 Anti-frost protection fuse. In the WRG 300 system, this must be supplied by the customer, bridged to terminals M2 and M4. See WRG 300 wiring diagram

WP 300 Heat pump

F2 Pressostat (high pressure fuse)

F3 Anti-frost protection fuse (vaporiser)

M3 Compressor motor (with starting relay)

S1.1/1.2 Series switch / double rocker*

S2 Off 2-pole

S3 Off 2-pole

BU1 safety plug

V distributor (supplied by the customer)

* Two off-switches with indicator light can be used instead of a series switch with a double rocker

WIRING DIAGRAM

WRG 300 WP

