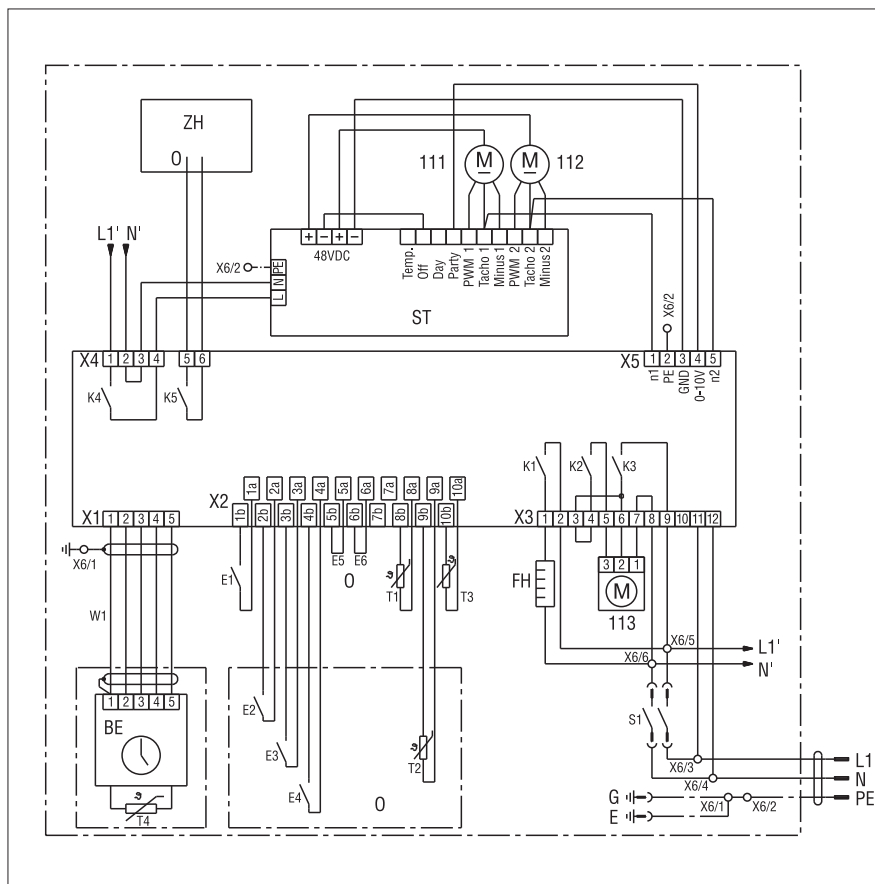


WS 250



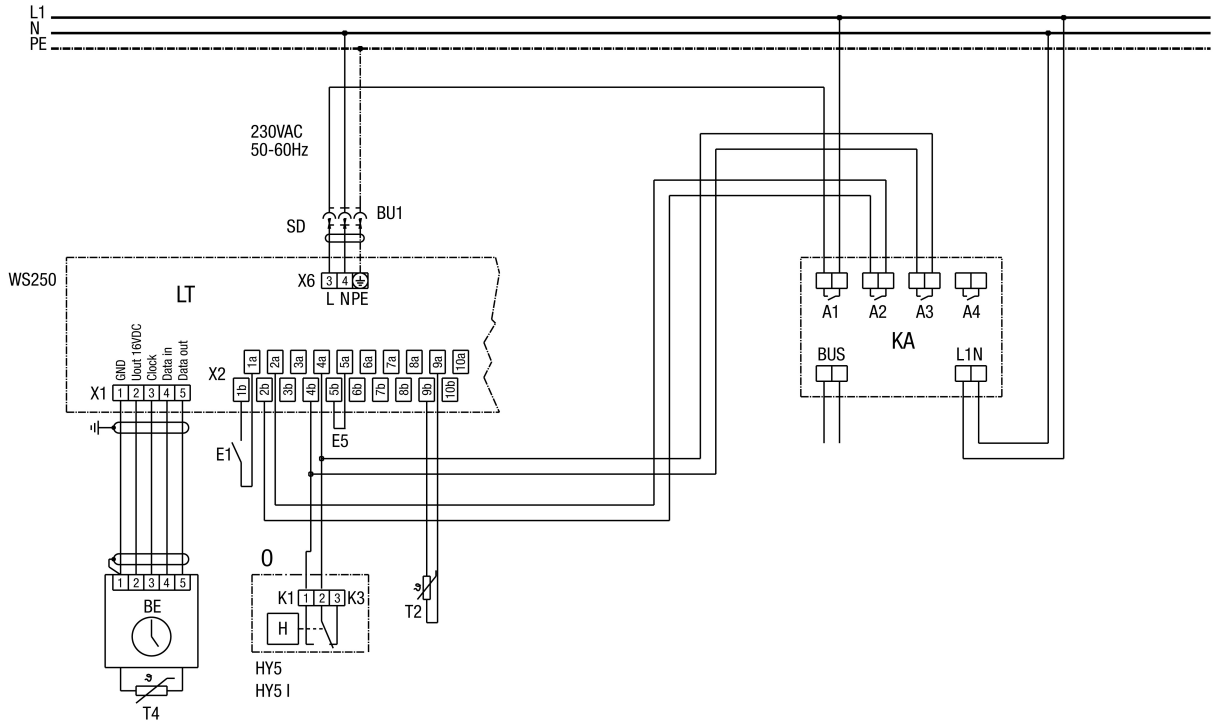
- E1 - pressure sensor / filter
- E2 CO2 sensor / relay to be supplied by the customer (potential-free contact)
- E3 - air quality controller EAQ 10/1 (potential-free contact)
- E4 - humidity sensor, hygrostat HY 5
- E5 - auxiliary heater available, jumper (option) (for ext. auxiliary heating, bridge E5)
- E6 - Select external temp. sensor T2, jumper (option) (for ext. T2 temp. sensor, bridge E6)
- T1 - outside air temp. sensor
- T2 - external temp. sensor (option)
- T3 - outgoing air temp. sensor
- T4 - room sensor for exhaust air
- K5 - switching contact for ext. auxiliary heater
- S1 - safety switch / activated via front plate
- ZH - external auxiliary heater (option)
- M1 - supply air fan
- M2 - exhaust air fan
- M3 - bypass lamella servomotor
- ST - circuit mains unit
- LT - power unit
- FH - anti-frost protection heating
- BE - operator unit
- G - housing
- E - feeder
- O - option

WIRING DIAGRAM

WS 250



WS 250 with KNX BUS



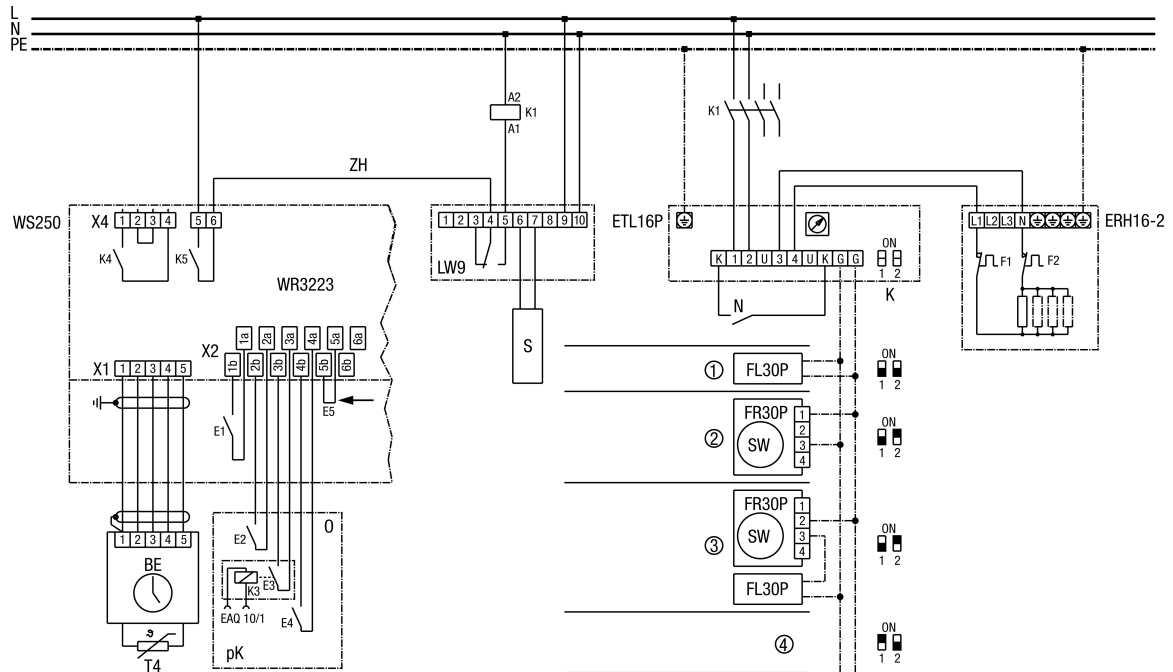
- SD - socket
 - LT - power unit
 - E5 - wire E5 wire jumper
 - BE - operator unit
 - O - option
 - K1 - terminal 1 - dehumidify
 - K1 - terminal 3 - dehumidify
 - T4 - room sensor
 - T2 - alternative room sensor for operator unit. External temp. sensor "KTY81-110" / option
 - KA - KNX actuator to be supplied by the customer
 - BUS - KNX BUS
- Set WS 250 to "man. Set fan level 1" on control unit.
- KNX actuator programming:
- Stage 0 = Switch off supply voltage (Stage 0 = A1)
 - Stage 1 = A1 ON, A2 OFF, A3 OFF
 - Stage 2 = A1 ON, A2 ON, A3 OFF (level 2 = A2)
 - Stage 3 = A1 ON, A2 OFF, A3 ON (60 min. overrun) (level 3 = A3)

WIRING DIAGRAM

WS 250



WS 250 with ERH 16-2 electrical air heater



- E5 - wire jumper E5; available for external auxiliary heater
- T4 - room sensor in the control unit of the WS 250. The heating requirement is determined by comparing the actual room temperature (T4) and the setpoint room temperature
- LW 9 - air flow monitor in supply air channel
- K1 - power contactor US 16
- ETL 16 P - electronic temperature controller
- FL 30 P - channel sensor in supply air channel
- FR 30 P - room sensor with setpoint generator
- ERH 16-2 - electrical air heaters
- BE - operator unit
- WR 3223 - power module
- ZH - external auxiliary heater on/off
- O - option
- SW- setpoint
- K - coding
- N - night reduction
- S - sensor
- pK - E2-E4 potential-free contacts!
- ① Ext. channel sensor and internal setpoint generator in ETL16P
- ② Ext. room sensor and external setpoint generator
- ③ Ext. channel sensor and external setpoint generator
- ④ Internal room sensor and internal setpoint generator in ETL16P