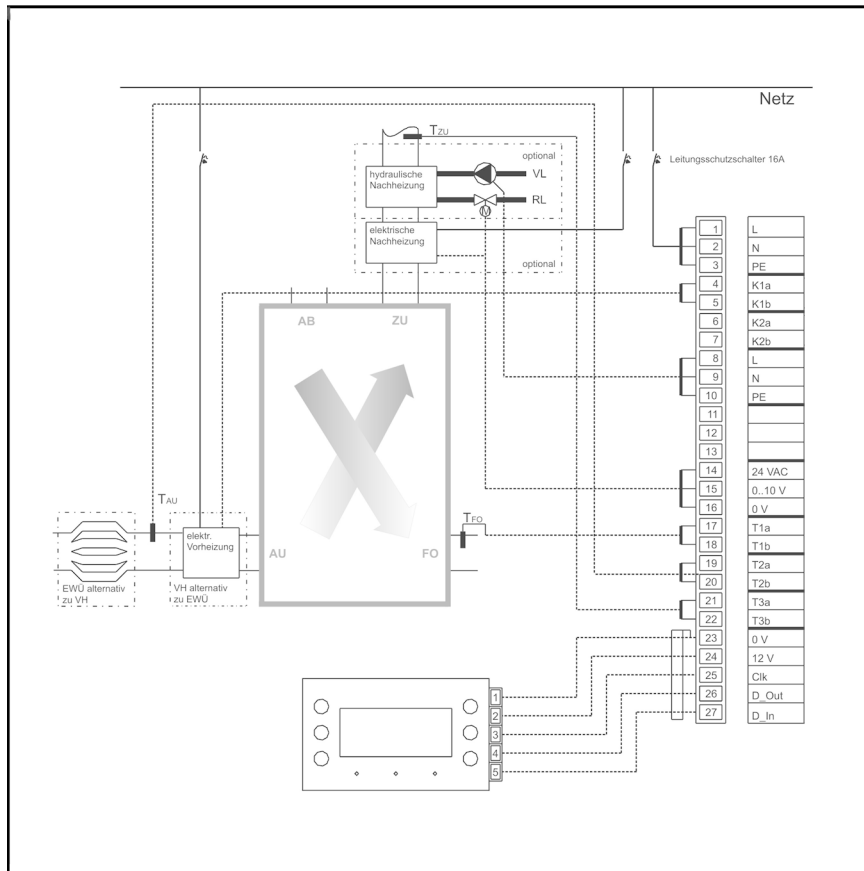


### WS 600



#### Terminal assignment:

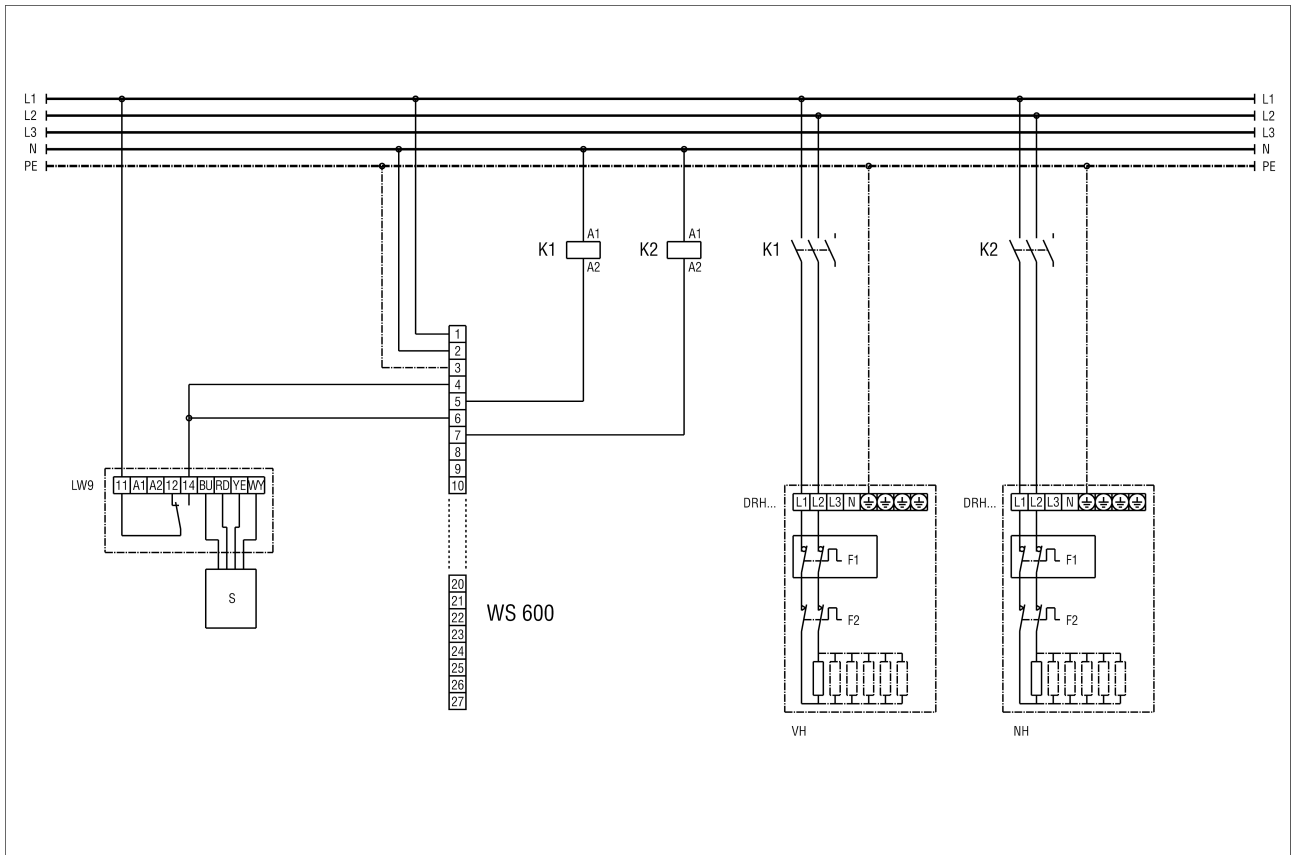
- 1, 2, 3 - 230 V, 50 Hz connection for mains supply
- 4, 5 - Electrical pre-heating contact (option)
- 6, 7 - Electrical re-heating contact (option)
- 8, 9, 10 - Heating circulation pump for hydraulic re-heating (option)
- 14, 15, 16 - Re-heating thermal valve / Controller for electrical re-heating (option)
- 17, 18 - Outgoing air temperature sensor
- 19, 20 - Outside air temperature sensor
- 21, 22 - Supply air temperature sensor
- 23, 24, 25, 26, 27 - Remote control interface (minimum 5 x 0.22 m<sup>2</sup>, screened)

# WIRING DIAGRAM

## WS 600



### WS 600 with DRH electrical air heater



LW 9 - air flow monitor

S - sensor

K1 - Contactor, electrical pre-heating, e.g. US 16 T

K2 - Contactor, electrical re-heating, e.g. US 16 T

DRH - electrical air heater

VH - Electrical pre-heating

NH - Electrical re-heating